

THE SHAPES BUILDING

Exhibit 11 - Organising shapes in space

• **Level of difficulty**
Level 2

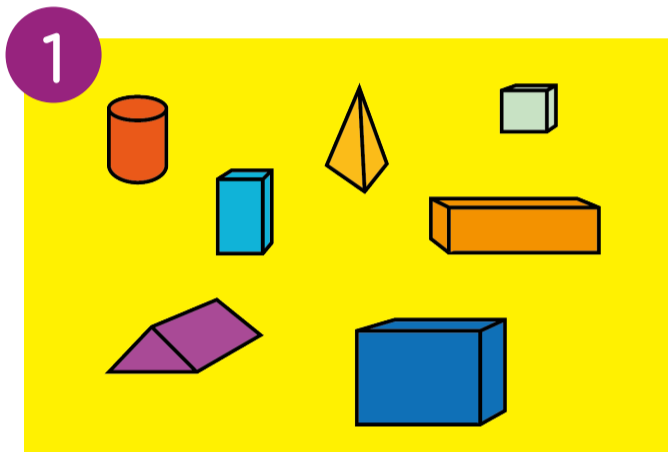
• **Duration of the activity**
15 minutes

• **Number of participants**
Individual activity or in pairs

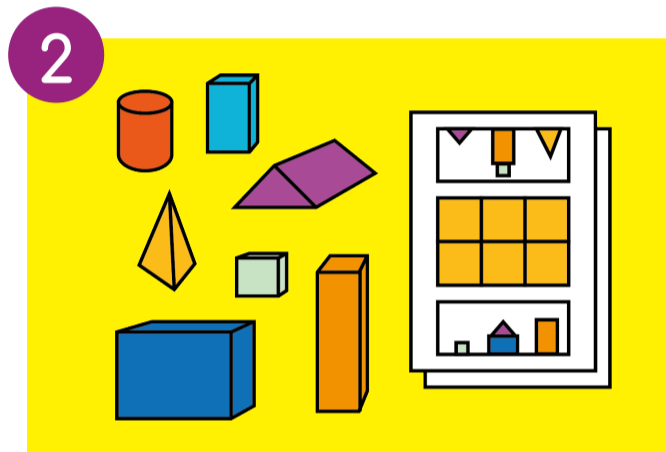
• **Mathematical concept**
Organising shapes in space, locating objects in relation to each other in space, solving a problem using geometric shapes, observing objects from different angles

• **Inventory**
- 5 challenge sheets, each with a different level of difficulty
- 11 "polyhedra" solids

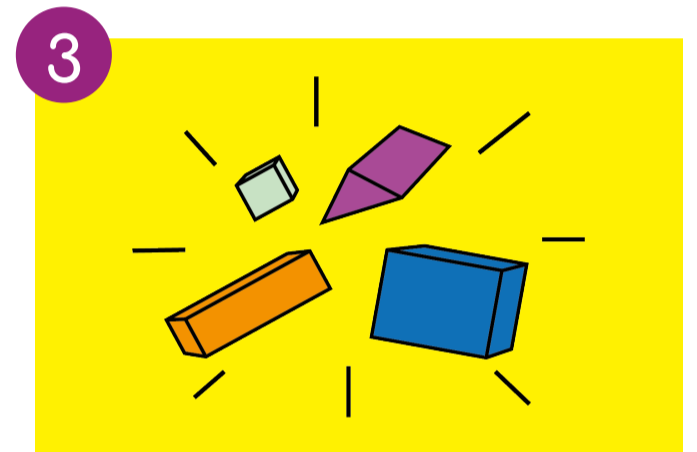
• **Skills worked on**
- Know how to situate objects in relation to each other
- Identify simple figures in an assembly
- Move from a horizontal 2D plane to a vertical 3D plane
- Cooperate between peers (for assembly and validation)



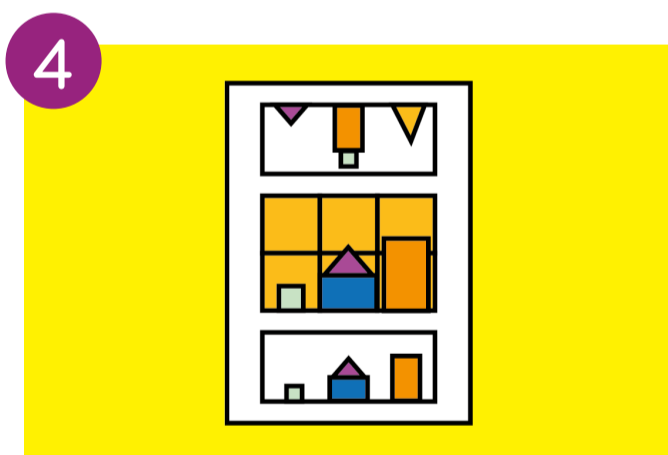
Touch and experiment freely with the solids.



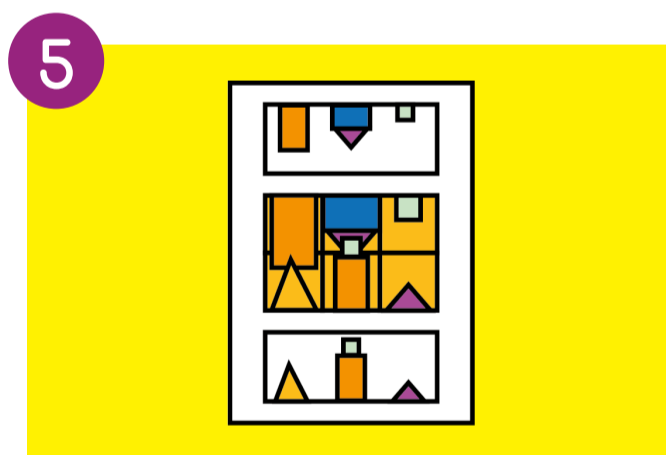
Look at the challenge sheet and understand the drawings and the different views.



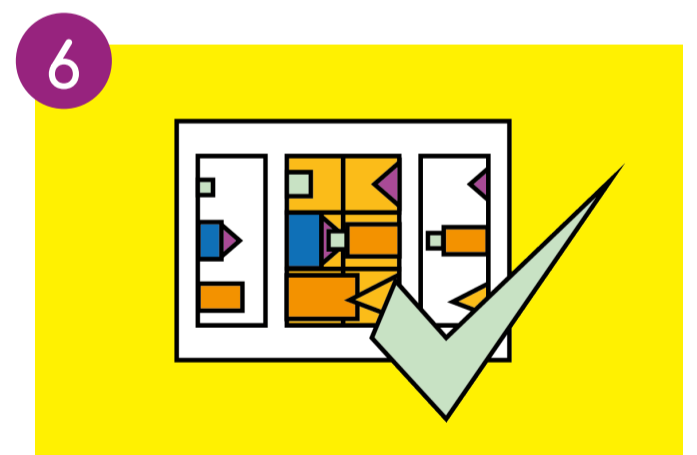
Choose the shapes needed for assembly.



Position the solids (polyhedra) on the grid to make the first plane.



Turn the challenge sheet to complete the assembly.



Turn the challenge sheet to check your classmate's position.

To Go Further

- Same activity but with one view only
- Blank challenge sheet for children to create their own
- Add another plane to the challenge sheets (1st plane / 2nd plane / 3rd plane)
- Make a challenge sheet with the top view
- Add 2 more players with side views

Learn more about the Recreamaths project at recreamaths.eu