

GOING FOR A WALK

Exhibit 13 - Study of the shapes, volumes and lengths of the urban environment

• **Level of difficulty**
Level 2

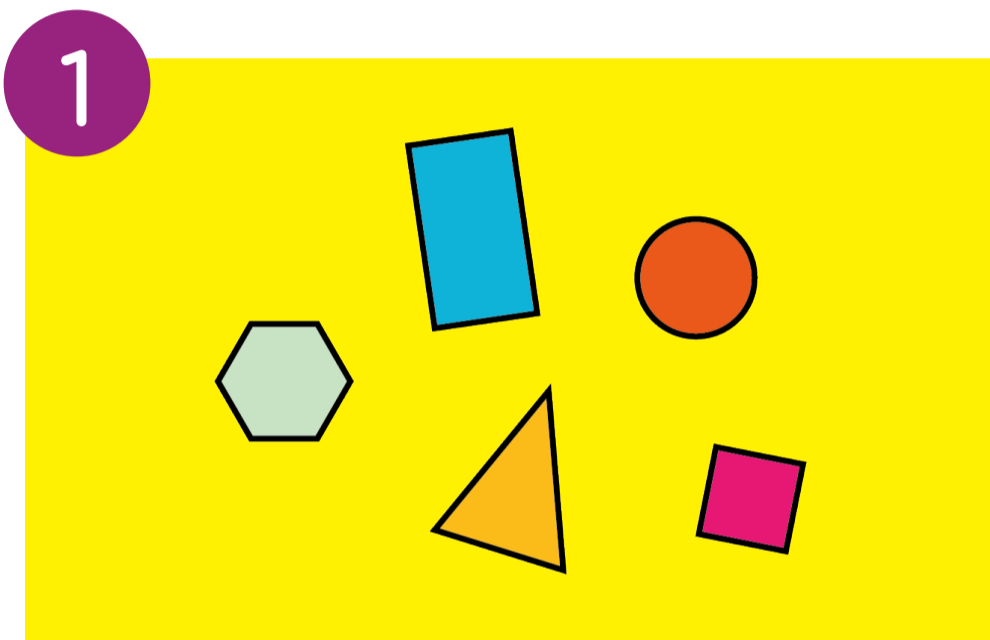
• **Duration of the activity**
15 minutes

• **Number of participants**
Classroom activity (1 professor with 5 to 30 students)

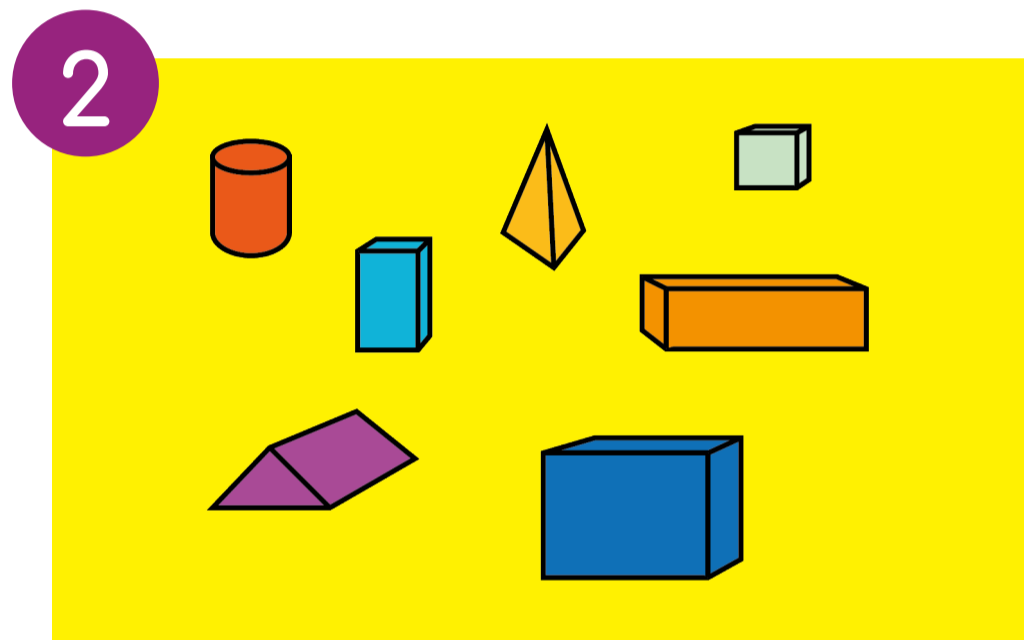
• **Mathematical concept**
Identify shapes and volumes, calculate lengths

• **Inventory**
- 1 computer
- 1 projector
- 1 white board or screen

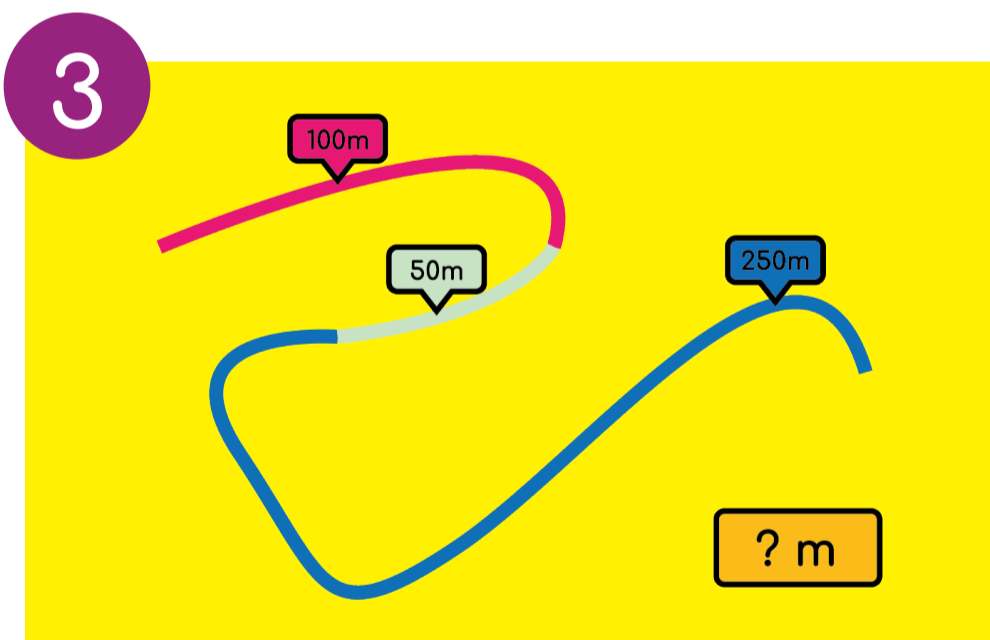
• **Skills worked on**
- Quantities and measurements:
. lengths
- Space and geometry:
. finding your way in space
. shapes
. volumes



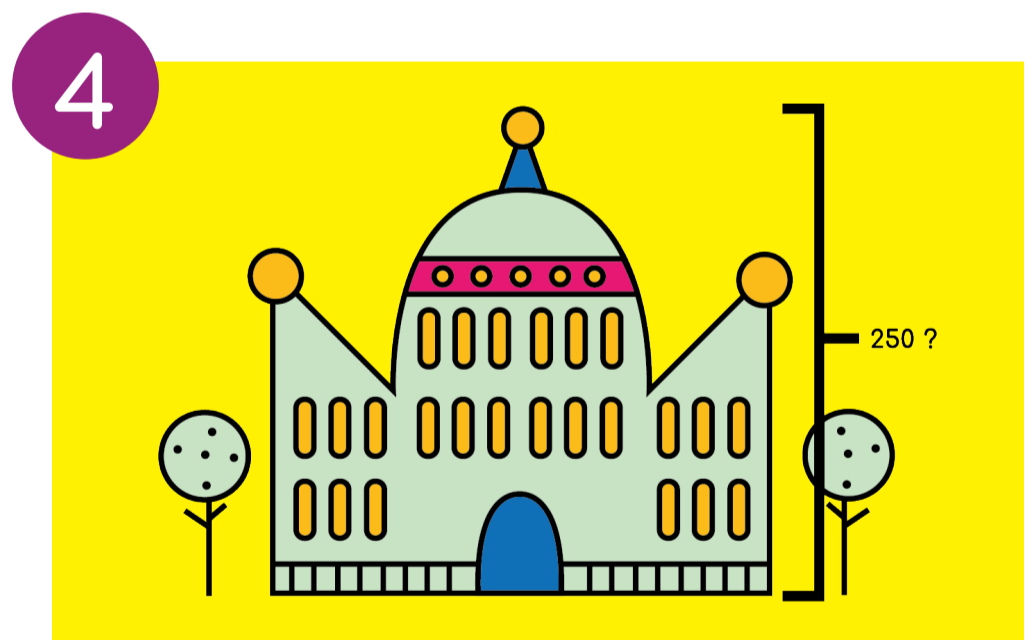
Identify the shapes.



Identify the volumes.



Calculate the length.



Find what measure unit it is : cm, m, km.

To Go Further

Learn maths by going on even more walks here:
<https://mathcitymap.eu/>

Learn more about the Recreamaths project at recreamaths.eu